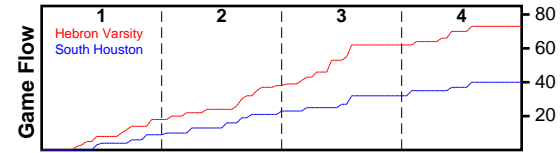


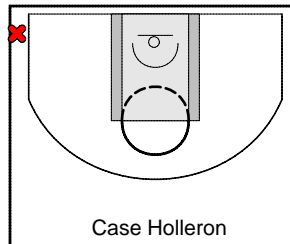
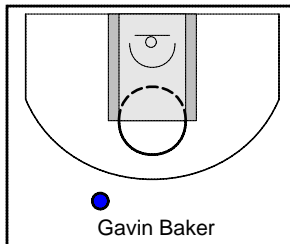
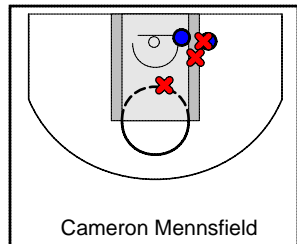
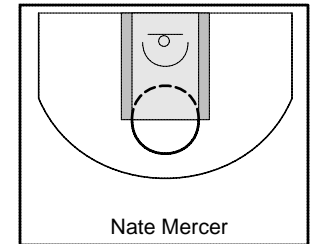
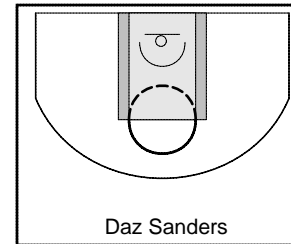
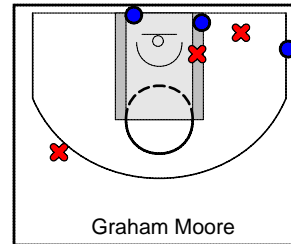
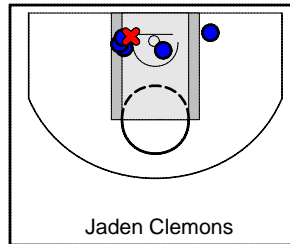
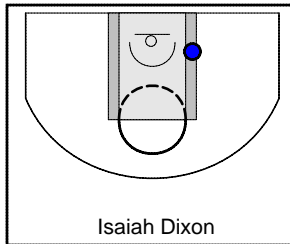
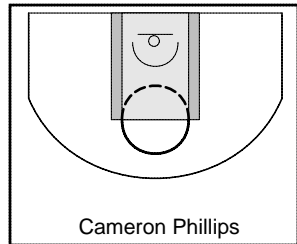
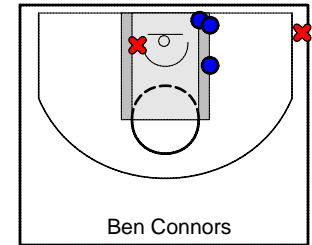
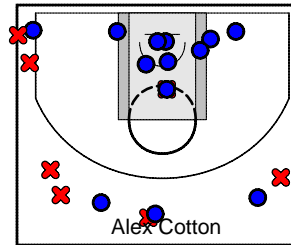
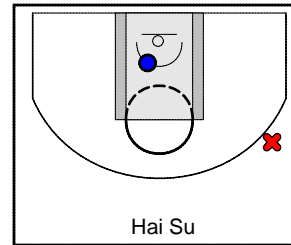
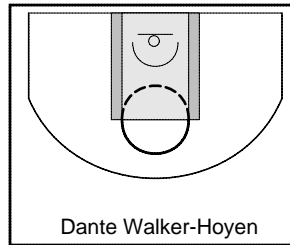
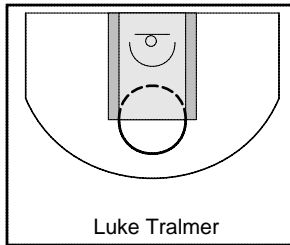
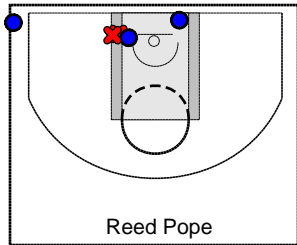
# Hebron Varsity

11/18/21 Hebron Varsity at South Houston

	1	2	3	4	T
Hebron Varsity	18	20	24	11	73
South Houston	9	14	9	8	40



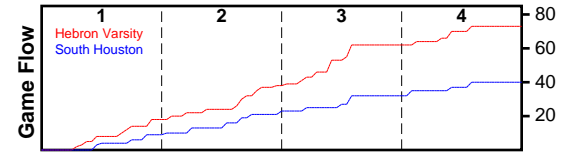
#	Name	G	MIN	FGM	FGA	FG%	2PM	2PA	2P%	3PM	3PA	3P%	FTM	FTA	FT%	OREB	DREB	REB	AST	STL	BLK	TO	PF	PTS
21	Reed Pope	1	18	3	6	0.500	2	5	0.400	1	1	1.000	0	0	0.000	2	4	6	1	0	0	0	1	7
33	Luke Tralmer	1	8	0	1	0.000	0	1	0.000	0	0	0.000	0	0	0.000	1	1	2	1	2	1	1	0	0
1	Dante Walker-Hoyen	0	0	0	0	0.000	0	0	0.000	0	0	0.000	0	0	0.000	0	0	0	0	0	0	0	0	0
20	Hai Su	1	5	1	2	0.500	1	1	1.000	0	1	0.000	0	0	0.000	0	1	1	0	0	0	1	0	2
4	Alex Cotton	1	21	12	18	0.667	8	8	1.000	4	10	0.400	0	0	0.000	0	2	2	3	4	0	0	0	28
5	Ben Connors	1	14	3	7	0.429	3	6	0.500	0	1	0.000	0	0	0.000	2	4	6	1	1	0	2	1	6
24	Cameron Phillips	0	0	0	0	0.000	0	0	0.000	0	0	0.000	0	0	0.000	0	0	0	0	0	0	0	0	0
25	Isaiah Dixon	1	10	0	0	0.000	0	0	0.000	0	0	0.000	1	2	0.500	0	4	4	1	0	1	1	0	1
11	Jaden Clemons	1	13	5	6	0.833	5	6	0.833	0	0	0.000	0	0	0.000	0	2	2	5	3	0	1	2	10
22	Graham Moore	1	17	2	5	0.400	2	5	0.400	0	0	0.000	1	2	0.500	2	3	5	1	1	3	0	1	5
30	Daz Sanders	1	5	1	1	1.000	1	1	1.000	0	0	0.000	0	0	0.000	2	1	3	2	1	0	1	0	2
3	Nate Mercer	1	7	0	0	0.000	0	0	0.000	0	0	0.000	1	2	0.500	0	0	0	0	0	0	1	3	1
10	Cameron Mennsfield	1	15	3	5	0.600	3	5	0.600	0	0	0.000	0	0	0.000	0	1	1	3	4	0	2	1	6
2	Gavin Baker	1	12	1	1	1.000	0	0	0.000	1	1	1.000	2	2	1.000	0	0	0	3	1	0	0	1	5
12	Case Holleron	1	7	0	2	0.000	0	1	0.000	0	1	0.000	0	0	0.000	0	0	0	1	1	0	1	0	0
<b>TOTALS</b>		<b>1</b>	<b>32</b>	<b>31</b>	<b>54</b>	<b>0.574</b>	<b>25</b>	<b>39</b>	<b>0.641</b>	<b>6</b>	<b>15</b>	<b>0.400</b>	<b>5</b>	<b>8</b>	<b>0.625</b>	<b>9</b>	<b>23</b>	<b>32</b>	<b>22</b>	<b>18</b>	<b>5</b>	<b>11</b>	<b>10</b>	<b>73</b>



# South Houston

11/18/21 Hebron Varsity at South Houston

	1	2	3	4	T
Hebron Varsity	18	20	24	11	73
South Houston	9	14	9	8	40



#	Name	G	MIN	FGM	FGA	FG%	2PM	2PA	2P%	3PM	3PA	3P%	FTM	FTA	FT%	OREB	DREB	REB	AST	STL	BLK	TO	PF	PTS
0	South Houston	1	29	15	38	0.395	7	11	0.636	8	27	0.296	2	6	0.333	3	6	9	0	1	1	4	4	40
	<b>TOTALS</b>	<b>1</b>	<b>32</b>	<b>15</b>	<b>38</b>	<b>0.395</b>	<b>7</b>	<b>11</b>	<b>0.636</b>	<b>8</b>	<b>27</b>	<b>0.296</b>	<b>2</b>	<b>6</b>	<b>0.333</b>	<b>3</b>	<b>6</b>	<b>9</b>	<b>0</b>	<b>1</b>	<b>1</b>	<b>4</b>	<b>4</b>	<b>40</b>

