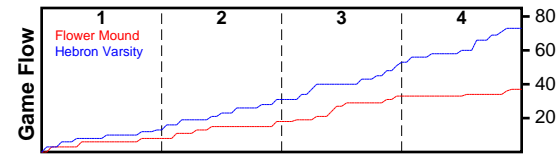


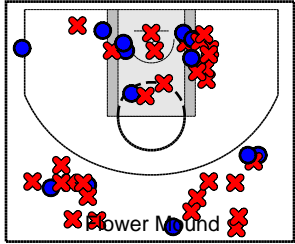
Flower Mound

2/15/22 Flower Mound at Hebron Varsity

	1	2	3	4	T
Flower Mound	8	10	15	4	37
Hebron Varsity	13	18	20	22	73



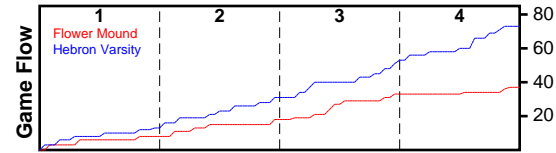
#	Name	G	MIN	FGM	FGA	FG%	2PM	2PA	2P%	3PM	3PA	3P%	FTM	FTA	FT%	OREB	DREB	REB	AST	STL	BLK	TO	PF	PTS
0	Flower Mound	1	32	13	43	0.302	7	22	0.318	6	21	0.286	5	11	0.455	9	17	26	0	0	0	7	8	37
	TOTALS	1	32	13	43	0.302	7	22	0.318	6	21	0.286	5	11	0.455	9	17	26	0	0	0	7	8	37



Hebron Varsity

2/15/22 Flower Mound at Hebron Varsity

	1	2	3	4	T
Flower Mound	8	10	15	4	37
Hebron Varsity	13	18	20	22	73



#	Name	G	MIN	FGM	FGA	FG%	2PM	2PA	2P%	3PM	3PA	3P%	FTM	FTA	FT%	OREB	DREB	REB	AST	STL	BLK	TO	PF	PTS
15	Fletcher Cravens	0	0	0	0	0.000	0	0	0.000	0	0	0.000	0	0	0.000	0	0	0	0	0	0	0	0	0
21	Reed Pope	1	17	2	4	0.500	1	1	1.000	1	3	0.333	0	0	0.000	0	3	3	2	0	0	0	4	5
100	Luke Tralmer	0	0	0	0	0.000	0	0	0.000	0	0	0.000	0	0	0.000	0	0	0	0	0	0	0	0	0
1	Dante Walker-Hoyen	1	16	3	3	1.000	3	3	1.000	0	0	0.000	1	2	0.500	3	2	5	0	1	0	0	0	7
4	Alex Cotton	1	22	10	19	0.526	1	3	0.333	9	16	0.562	2	3	0.667	0	2	2	4	2	0	0	1	31
5	Ben Connors	1	13	3	9	0.333	2	4	0.500	1	5	0.200	0	0	0.000	3	3	6	1	1	0	2	2	7
24	Jalen Haynes	1	17	2	5	0.400	0	1	0.000	2	4	0.500	2	2	1.000	1	1	2	3	1	0	2	1	8
25	Isaiah Dixon	1	15	2	4	0.500	2	4	0.500	0	0	0.000	0	0	0.000	1	4	5	0	0	3	2	3	4
33	Isaiah Williams	0	0	0	0	0.000	0	0	0.000	0	0	0.000	0	0	0.000	0	0	0	0	0	0	0	0	0
11	Jaden Clemons	1	21	1	5	0.200	0	1	0.000	1	4	0.250	0	0	0.000	1	1	2	6	0	0	0	1	3
22	Graham Moore	1	15	1	2	0.500	1	2	0.500	0	0	0.000	0	0	0.000	2	2	4	1	0	0	0	0	2
30	Daz Sanders	0	0	0	0	0.000	0	0	0.000	0	0	0.000	0	0	0.000	0	0	0	0	0	0	0	0	0
3	Nate Mercer	0	0	0	0	0.000	0	0	0.000	0	0	0.000	0	0	0.000	0	0	0	0	0	0	0	0	0
10	Cameron Mennsfield	1	17	1	3	0.333	0	0	0.000	1	3	0.333	0	0	0.000	1	1	2	4	4	0	0	2	3
2	Gavin Baker	0	0	0	0	0.000	0	0	0.000	0	0	0.000	0	0	0.000	0	0	0	0	0	0	0	0	0
12	Case Holleron	0	0	0	0	0.000	0	0	0.000	0	0	0.000	0	0	0.000	0	0	0	0	0	0	0	0	0
2	Ashton Toney	1	12	1	5	0.200	0	0	0.000	1	5	0.200	0	0	0.000	0	2	2	0	0	0	0	1	3
	TOTALS	1	32	26	59	0.441	10	19	0.526	16	40	0.400	5	7	0.714	12	21	33	21	9	3	6	15	73

