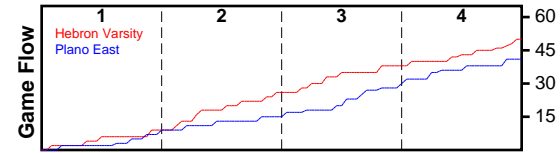


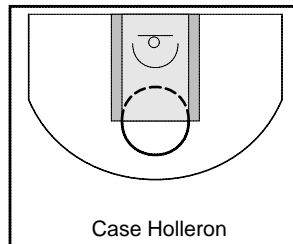
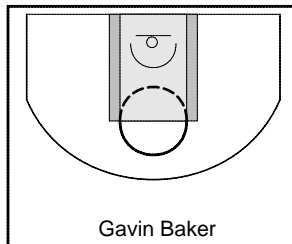
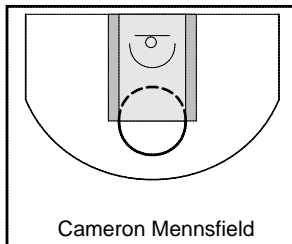
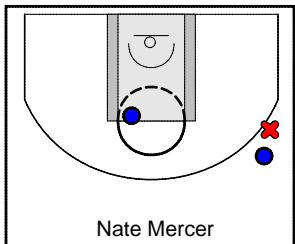
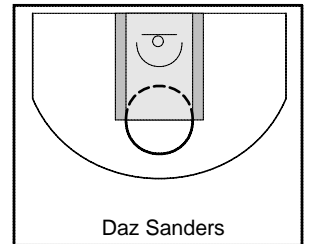
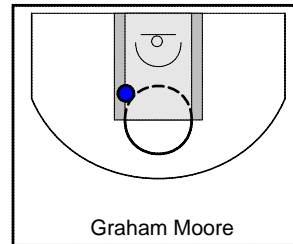
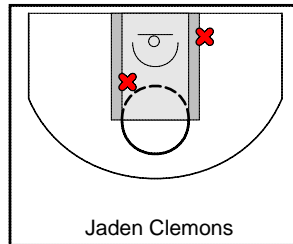
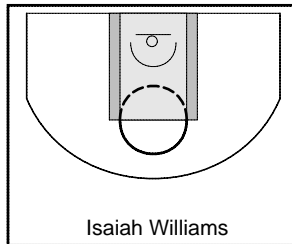
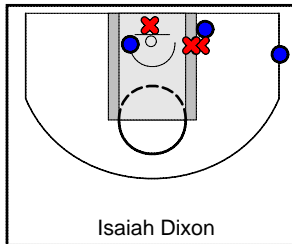
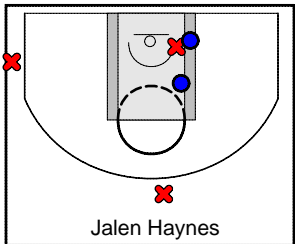
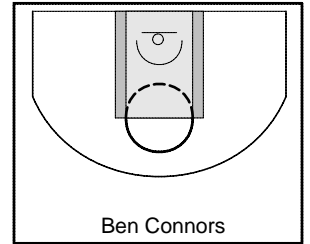
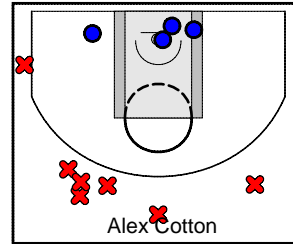
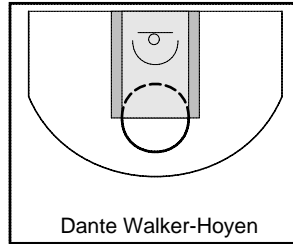
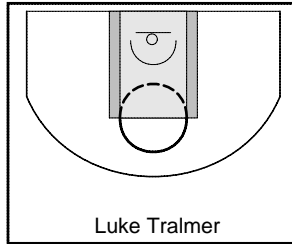
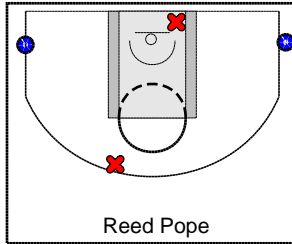
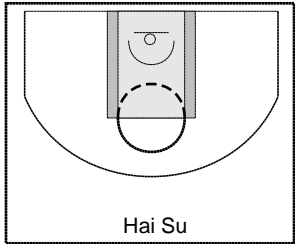
Hebron Varsity

1/18/22 Hebron Varsity at Plano East

	1	2	3	4	T
Hebron Varsity	9	17	12	12	50
Plano East	7	8	13	13	41



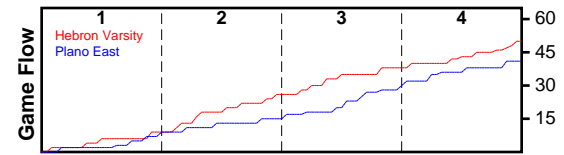
#	Name	G	MIN	FGM	FGA	FG%	2PM	2PA	2P%	3PM	3PA	3P%	FTM	FTA	FT%	OREB	DREB	REB	AST	STL	BLK	TO	PF	PTS
15	Hai Su	0	0	0	0	0.000	0	0	0.000	0	0	0.000	0	0	0.000	0	0	0	0	0	0	0	0	0
21	Reed Pope	1	21	2	4	0.500	0	1	0.000	2	3	0.667	1	2	0.500	0	4	4	1	1	1	2	1	7
100	Luke Tralmer	0	0	0	0	0.000	0	0	0.000	0	0	0.000	0	0	0.000	0	0	0	0	0	0	0	0	0
1	Dante Walker-Hoyen	1	16	1	1	1.000	1	1	1.000	0	0	0.000	0	0	0.000	2	2	4	1	1	0	0	1	2
4	Alex Cotton	1	32	5	12	0.417	5	5	1.000	0	7	0.000	0	0	0.000	2	3	5	4	2	2	3	1	10
5	Ben Connors	0	0	0	0	0.000	0	0	0.000	0	0	0.000	0	0	0.000	0	0	0	0	0	0	0	0	0
24	Jalen Haynes	1	20	2	5	0.400	2	3	0.667	0	2	0.000	7	9	0.778	0	1	1	1	0	0	3	2	11
25	Isaiah Dixon	1	27	3	7	0.429	3	7	0.429	0	0	0.000	5	7	0.714	3	3	6	0	2	5	0	1	11
33	Isaiah Williams	0	0	0	0	0.000	0	0	0.000	0	0	0.000	0	0	0.000	0	0	0	0	0	0	0	0	0
11	Jaden Clemons	1	16	0	2	0.000	0	2	0.000	0	0	0.000	0	0	0.000	0	2	2	2	0	1	4	5	0
22	Graham Moore	1	11	2	4	0.500	2	4	0.500	0	0	0.000	0	0	0.000	4	3	7	0	0	1	2	1	4
30	Daz Sanders	0	0	0	0	0.000	0	0	0.000	0	0	0.000	0	0	0.000	0	0	0	0	0	0	0	0	0
3	Nate Mercer	1	18	2	3	0.667	1	1	1.000	1	2	0.500	0	0	0.000	0	1	1	2	1	0	2	5	5
10	Cameron Mennsfield	0	0	0	0	0.000	0	0	0.000	0	0	0.000	0	0	0.000	0	0	0	0	0	0	0	0	0
2	Gavin Baker	1	3	0	0	0.000	0	0	0.000	0	0	0.000	0	0	0.000	0	0	0	0	0	0	0	0	0
12	Case Holleron	0	0	0	0	0.000	0	0	0.000	0	0	0.000	0	0	0.000	0	0	0	0	0	0	0	0	0
	TOTALS	1	32	17	38	0.447	14	24	0.583	3	14	0.214	13	18	0.722	11	19	30	11	7	10	16	17	50



Plano East

1/18/22 Hebron Varsity at Plano East

	1	2	3	4	T
Hebron Varsity	9	17	12	12	50
Plano East	7	8	13	13	41



#	Name	G	MIN	FGM	FGA	FG%	2PM	2PA	2P%	3PM	3PA	3P%	FTM	FTA	FT%	OREB	DREB	REB	AST	STL	BLK	TO	PF	PTS
0	Plano East	1	32	14	37	0.378	11	24	0.458	3	13	0.231	10	20	0.500	5	6	11	0	0	0	9	16	41
	TOTALS	1	32	14	37	0.378	11	24	0.458	3	13	0.231	10	20	0.500	5	6	11	0	0	0	9	16	41

