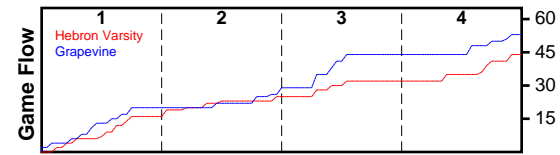


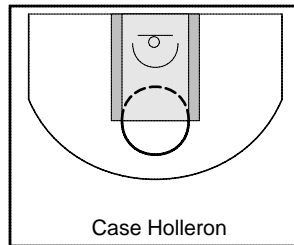
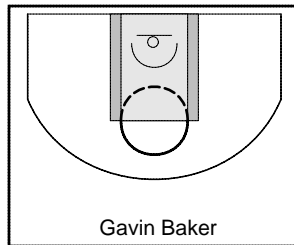
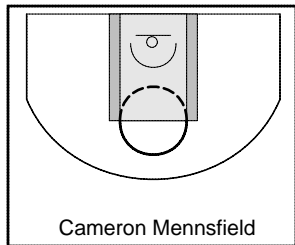
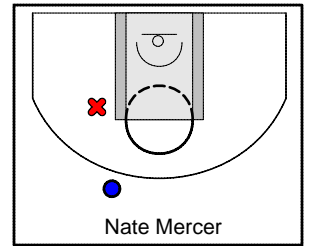
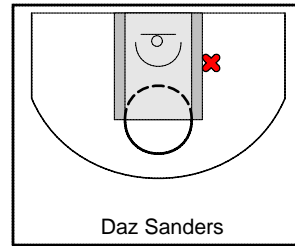
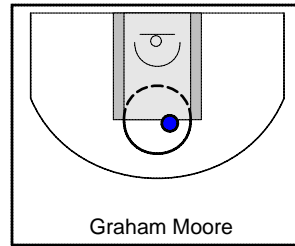
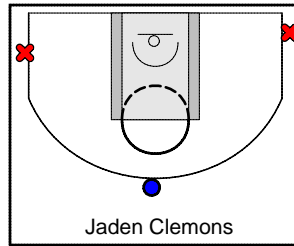
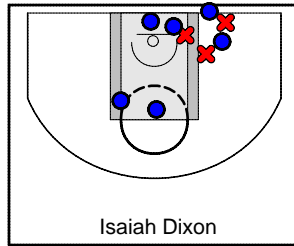
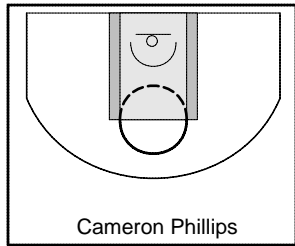
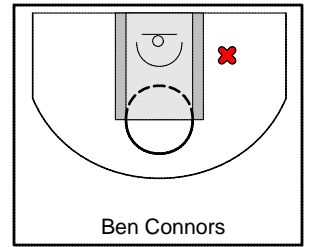
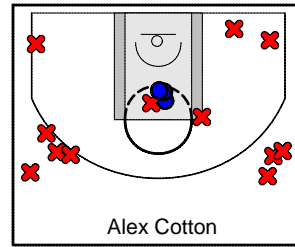
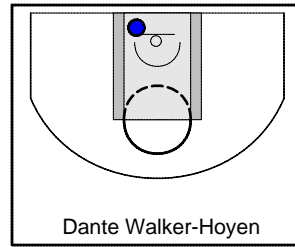
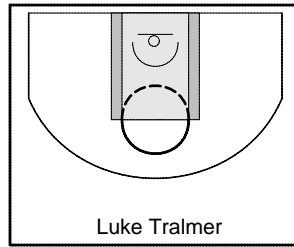
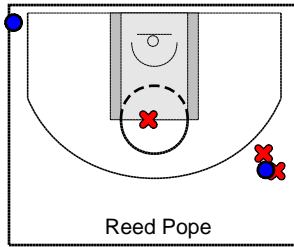
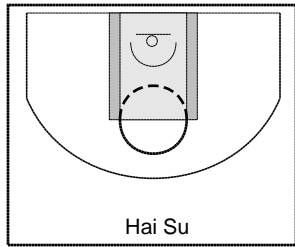
Hebron Varsity

11/19/21 Hebron Varsity at Grapevine

	1	2	3	4	T
Hebron Varsity	16	9	7	12	44
Grapevine	20	6	18	9	53



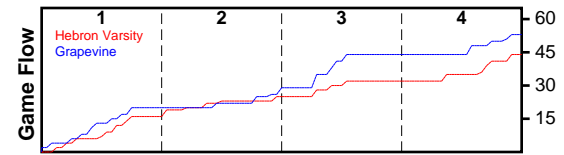
#	Name	G	MIN	FGM	FGA	FG%	2PM	2PA	2P%	3PM	3PA	3P%	FTM	FTA	FT%	OREB	DREB	REB	AST	STL	BLK	TO	PF	PTS
15	Hai Su	0	0	0	0	0.000	0	0	0.000	0	0	0.000	0	0	0.000	0	0	0	0	0	0	0	0	0
21	Reed Pope	1	17	2	5	0.400	0	1	0.000	2	4	0.500	0	0	0.000	1	5	6	0	0	0	1	0	6
100	Luke Tralmer	0	0	0	0	0.000	0	0	0.000	0	0	0.000	0	0	0.000	0	0	0	0	0	0	0	0	0
1	Dante Walker-Hoyen	1	3	1	1	1.000	1	1	1.000	0	0	0.000	1	1	1.000	0	0	0	0	0	0	0	0	3
4	Alex Cotton	1	29	3	15	0.200	3	7	0.429	0	8	0.000	1	2	0.500	2	3	5	3	0	1	2	0	7
5	Ben Connors	1	11	0	2	0.000	0	2	0.000	0	0	0.000	0	0	0.000	1	2	3	0	0	0	1	3	0
24	Cameron Phillips	0	0	0	0	0.000	0	0	0.000	0	0	0.000	0	0	0.000	0	0	0	0	0	0	0	0	0
25	Isaiah Dixon	1	26	6	10	0.600	6	10	0.600	0	0	0.000	3	6	0.500	3	8	11	2	1	1	1	2	15
11	Jaden Clemons	1	26	1	3	0.333	0	0	0.000	1	3	0.333	5	5	1.000	0	1	1	5	1	1	4	4	8
22	Graham Moore	1	8	1	1	1.000	1	1	1.000	0	0	0.000	0	0	0.000	0	0	0	0	0	0	2	2	2
30	Daz Sanders	1	4	0	1	0.000	0	1	0.000	0	0	0.000	0	0	0.000	0	0	0	0	0	0	1	0	0
3	Nate Mercer	1	16	1	3	0.333	0	1	0.000	1	2	0.500	0	0	0.000	1	1	2	0	1	0	1	1	3
10	Cameron Mennsfield	1	16	0	1	0.000	0	0	0.000	0	1	0.000	0	0	0.000	1	1	2	1	0	0	1	4	0
2	Gavin Baker	1	9	0	0	0.000	0	0	0.000	0	0	0.000	0	0	0.000	0	0	0	0	0	0	0	0	0
12	Case Holleron	0	0	0	0	0.000	0	0	0.000	0	0	0.000	0	0	0.000	0	0	0	0	0	0	0	0	0
TOTALS		1	32	15	42	0.357	11	24	0.458	4	18	0.222	10	14	0.714	9	21	30	11	3	3	14	16	44



Grapevine

11/19/21 Hebron Varsity at Grapevine

	1	2	3	4	T
Hebron Varsity	16	9	7	12	44
Grapevine	20	6	18	9	53



#	Name	G	MIN	FGM	FGA	FG%	2PM	2PA	2P%	3PM	3PA	3P%	FTM	FTA	FT%	OREB	DREB	REB	AST	STL	BLK	TO	PF	PTS
0	Grapevine	1	0	17	40	0.425	10	21	0.476	7	19	0.368	12	15	0.800	6	4	10	0	0	1	5	10	53
TOTALS		1	32	17	40	0.425	10	21	0.476	7	19	0.368	12	15	0.800	6	4	10	0	0	1	5	10	53

