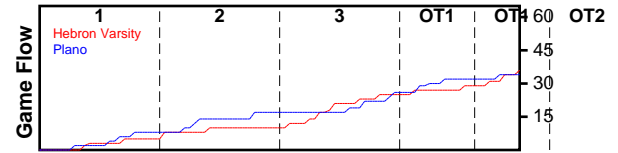


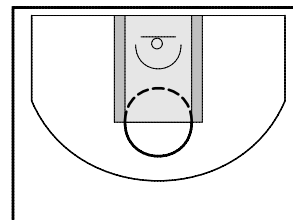
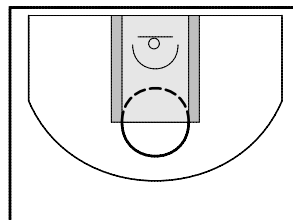
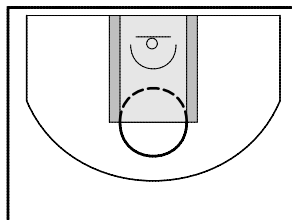
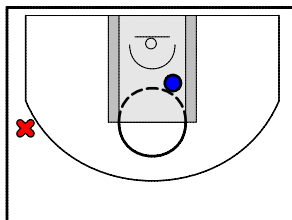
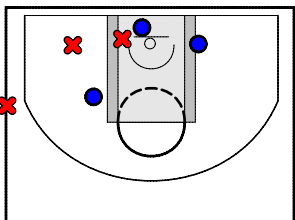
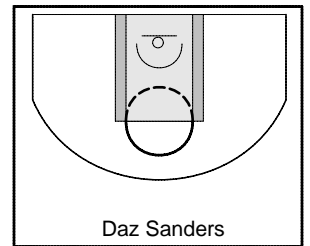
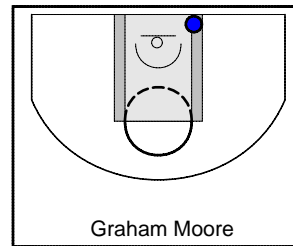
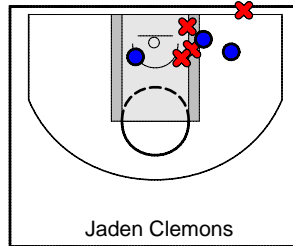
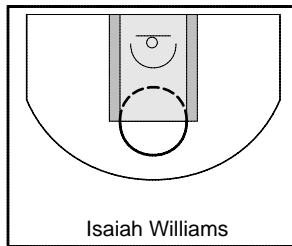
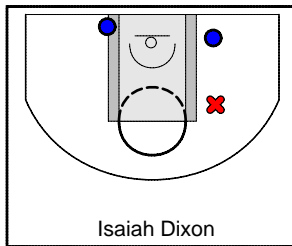
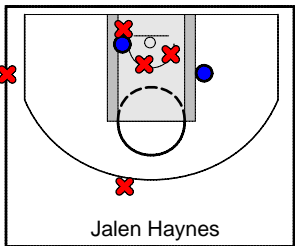
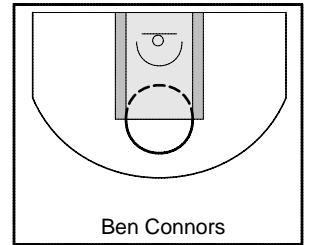
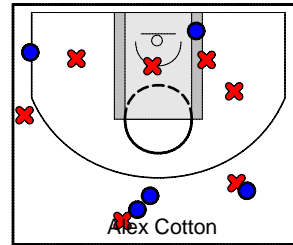
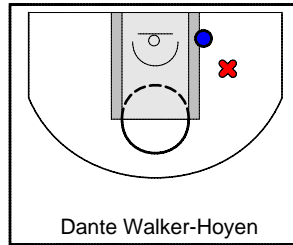
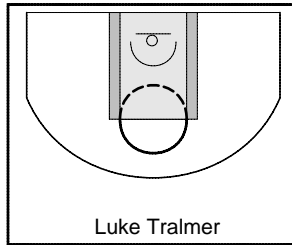
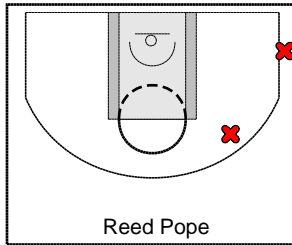
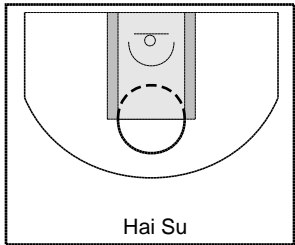
Hebron Varsity

1/25/22 Hebron Varsity at Plano

	1	2	3	OT1	OT1	OT2	T
Hebron Varsity	5	5	15	0	2	5	41
Plano	8	9	9	0	2	11	47



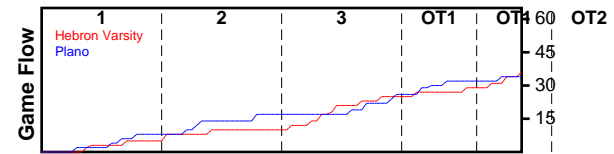
#	Name	G	MIN	FGM	FGA	FG%	2PM	2PA	2P%	3PM	3PA	3P%	FTM	FTA	FT%	OREB	DREB	REB	AST	STL	BLK	TO	PF	PTS
15	Hai Su	0	0	0	0	0.000	0	0	0.000	0	0	0.000	0	0	0.000	0	0	0	0	0	0	0	0	0
21	Reed Pope	1	4	0	2	0.000	0	0	0.000	0	2	0.000	0	0	0.000	0	1	1	0	0	0	0	0	0
100	Luke Tralmer	0	0	0	0	0.000	0	0	0.000	0	0	0.000	0	0	0.000	0	0	0	0	0	0	0	0	0
1	Dante Walker-Hoyen	1	8	1	2	0.500	1	2	0.500	0	0	0.000	0	0	0.000	0	0	0	0	0	0	1	2	2
4	Alex Cotton	1	42	5	12	0.417	1	5	0.200	4	7	0.571	0	0	0.000	0	4	4	0	1	0	1	0	14
5	Ben Connors	0	0	0	0	0.000	0	0	0.000	0	0	0.000	0	0	0.000	0	0	0	0	0	0	0	0	0
24	Jalen Haynes	1	21	2	7	0.286	2	5	0.400	0	2	0.000	1	1	1.000	0	1	1	2	1	1	4	4	5
25	Isaiah Dixon	1	33	1	2	0.500	1	2	0.500	0	0	0.000	0	0	0.000	0	3	3	1	1	2	1	3	2
33	Isaiah Williams	0	0	0	0	0.000	0	0	0.000	0	0	0.000	0	0	0.000	0	0	0	0	0	0	0	0	0
11	Jaden Clemons	1	32	3	7	0.429	3	7	0.429	0	0	0.000	1	4	0.250	0	3	3	3	1	0	5	4	7
22	Graham Moore	1	21	1	1	1.000	1	1	1.000	0	0	0.000	0	0	0.000	0	6	6	1	2	0	1	0	2
30	Daz Sanders	0	0	0	0	0.000	0	0	0.000	0	0	0.000	0	0	0.000	0	0	0	0	0	0	0	0	0
3	Nate Mercer	1	32	3	6	0.500	3	5	0.600	0	1	0.000	1	2	0.500	1	0	1	1	2	0	4	2	7
10	Cameron Mennsfield	1	22	1	2	0.500	1	1	1.000	0	1	0.000	0	0	0.000	0	2	2	0	0	0	1	0	2
2	Gavin Baker	0	0	0	0	0.000	0	0	0.000	0	0	0.000	0	0	0.000	0	0	0	0	0	0	0	0	0
12	Case Holleron	0	0	0	0	0.000	0	0	0.000	0	0	0.000	0	0	0.000	0	0	0	0	0	0	0	0	0
2	Ashton Toney	0	0	0	0	0.000	0	0	0.000	0	0	0.000	0	0	0.000	0	0	0	0	0	0	0	0	0
	TOTALS	1	32	17	41	0.415	13	28	0.464	4	13	0.308	3	7	0.429	1	20	21	8	8	3	18	15	41



Plano

1/25/22 Hebron Varsity at Plano

	1	2	3	OT1	OT1	OT2	T
Hebron Varsity	5	5	15	0	2	5	41
Plano	8	9	9	0	2	11	47



#	Name	G	MIN	FGM	FGA	FG%	2PM	2PA	2P%	3PM	3PA	3P%	FTM	FTA	FT%	OREB	DREB	REB	AST	STL	BLK	TO	PF	PTS
0	Plano	1	42	18	40	0.450	15	32	0.469	3	8	0.375	8	13	0.615	5	20	25	0	0	1	8	9	47
	TOTALS	1	32	18	40	0.450	15	32	0.469	3	8	0.375	8	13	0.615	5	20	25	0	0	1	8	9	47

